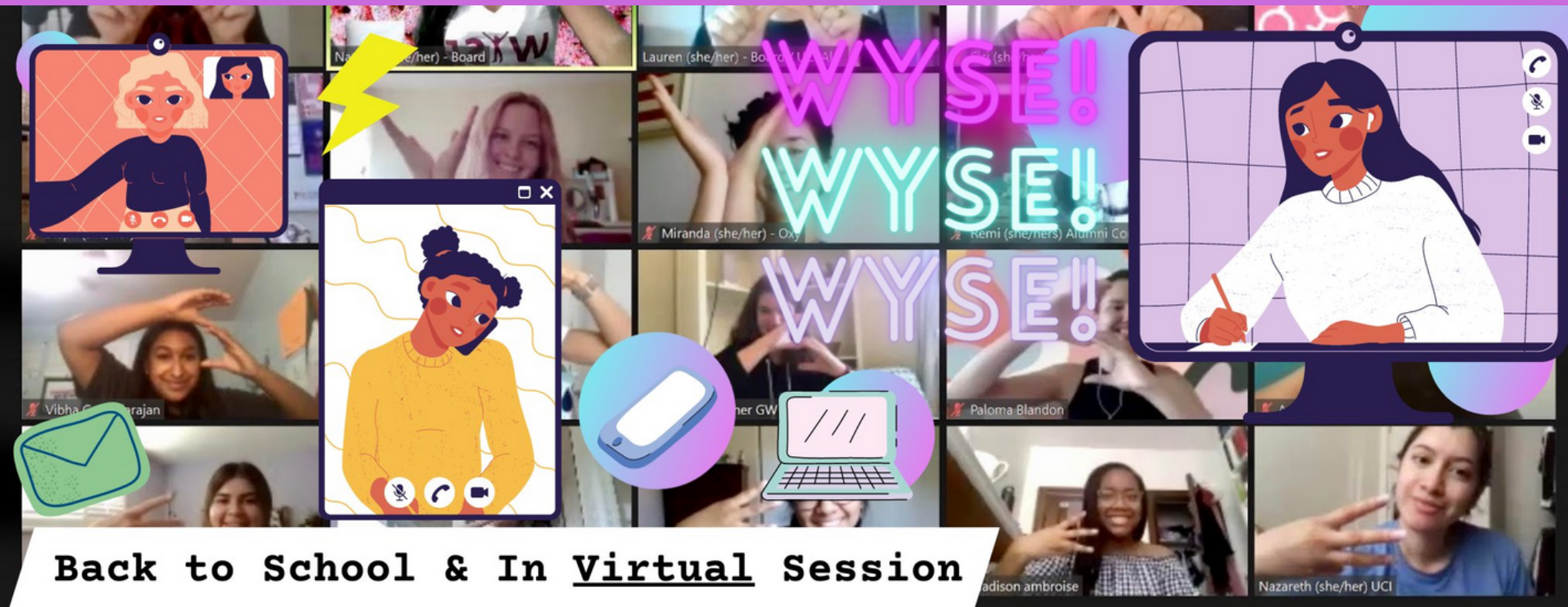


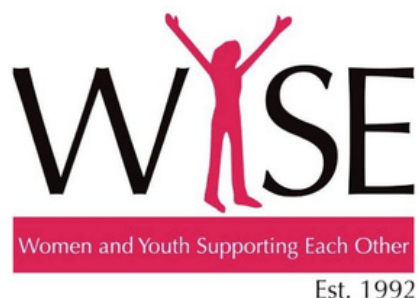
Annual Report 2020

WOMEN AND YOUTH SUPPORTING EACH OTHER



Back to School & In Virtual Session

Letter from the Board



Resilience. That is the word that best describes this program year for WYSE branches across the country. What does an after school mentorship program look like when conducted virtually? How would WYSE mentors navigate supporting mentees and one another during a time wrought with such uncertainty for everyone, everywhere?

Thankfully, our WYSE community persisted. Women and youth, supporting each other. While the 2020-2021 program year did not look like any other, as a national organization, we innovated and created more avenues and resources.

Letter from the Board



In July 2020, we kicked off the new program year with a **Virtual National Leadership Training Conference (NLTC)** that offered connectivity and leadership training to more branch directors than ever before. In October, we kicked off the **Executive Director Cohort**, which offered branch leaders the opportunity to share resources and best practices in pivoting to virtual session. Additionally, through generous funding from the Marilyn S. Broad Foundation, we were able to offer our branches **WYSE mini-grants** to fund online hosting platforms and program materials.

Letter from the Board



Thank you so much to our network of mentors, mentees, alumni, advisors, and donors who helped sustain WYSE as we collectively persisted through one of the most challenging program years to date.

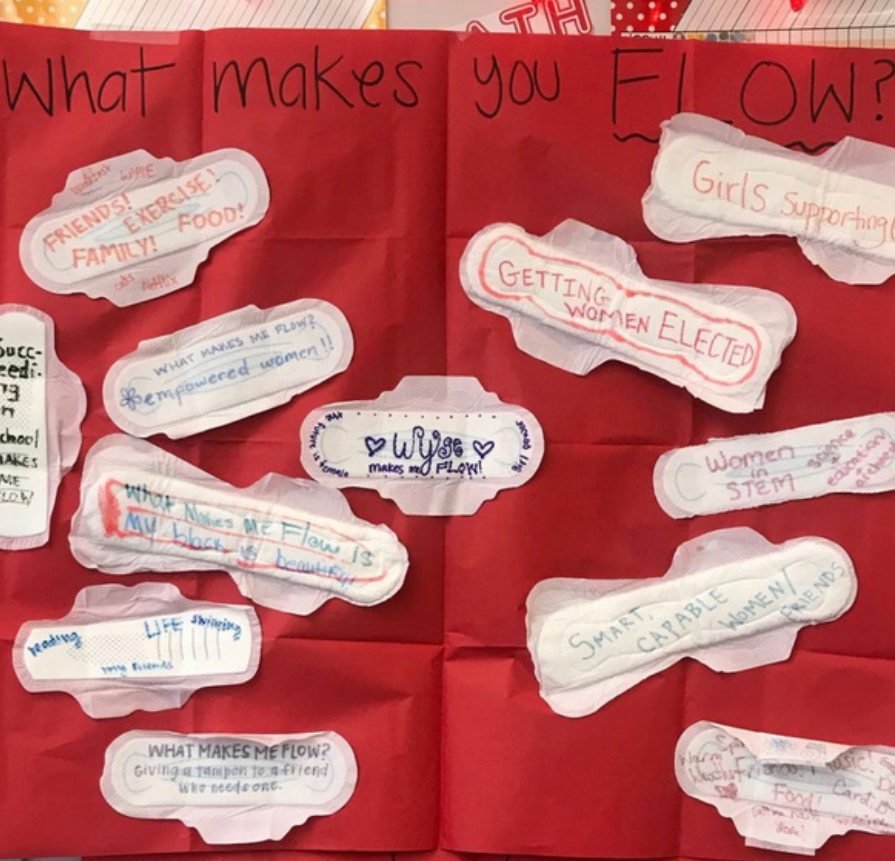
In this year's annual report, we hope you enjoy the highlights of resilience, including spotlights on NLTC, WYSE Week, and George Washington University WYSE expanding to a second school site in the middle of a pandemic.

WYSElove,
The National Board of Directors

What is WYSE?

Women and Youth Supporting Each Other (WYSE) is a national mentorship organization that provides adolescent girls in underserved communities with the information, resources, and support to make healthy decisions and create community change. With branches at ten universities nationwide, WYSE focuses on empowering women and girls through group-based and one-on-one mentorship offered by college women volunteers, and employs a national curriculum to address critical issues, from building self-awareness to exploring future options.

WYSE is committed to inclusivity and belonging for all women: trans women, cis women, femmes, female-identifying, and individuals assigned female at birth. We envision a world in which we are all empowered to determine their future and effect change.



... women of all colors



Mission

To empower young women by providing the resources and support necessary to make positive life choices and create community change

Vision

To create a world in which all women are empowered to determine their future and effect change

Pillars of WYSE

Critical Thinking and Decision Making

WYSE women explore fully and think deeply about significant issues in order to make informed, deliberate decisions.

Personal Identity and Self Esteem

WYSE women strive to recognize, explore, and proudly express who they are as individuals.

Strong Relationships

WYSE women believe in the power of positive relationships to change lives. WYSE women dedicate themselves to being a positive influence and role model for those around them.

Safe Community and Exploration

WYSE women express their ideas, ask questions, and learn in a safe, open, and accepting community. WYSE women encourage others to speak up and help each other discover new ideas.

Community Change

WYSE women strive to make a better society by gathering information, spreading awareness and taking action on issues that are meaningful to them.

Our Branches

George Washington University | Marquette University | Occidental College |
Stanford University | Tulane University | University of Chicago | University of California, Berkeley |
University of California, Irvine | University of California, Los Angeles | University of Southern California

Our Middle Schools

Cesar Chavez Academy | Ravenswood Middle School | PUC CALS | Mark Twain Middle School |
Francisco Sepulveda Middle School | Camino Nuevo Charter Academy | VISTA Charter Middle School |
Animo Jefferson Charter Middle School | Crown Preparatory Academy | Jefferson Middle School
Academy | Scholarship Prep | John B. Drake Elementary | Lovonya DeJean Middle School |
Barack Obama School of Career and Technical Education

Program Year 2020 - 2021

Milestones

275+ mentees and mentors served by WYSE

67 young women involved in branch leadership

10 WYSE branches nationwide

6 WYSE branches that transitioned to virtual sessions

3 WYSE branches that received national WYSE mini grants

Methodology:

Total number of mentees and mentors are taken from point-in-time counts and likely represent an undercount of the number of program participants.



Summary of Mentor Survey Responses

95%

Attended almost every session.

100%

WYSE helped me be involved in my community.

100%

WYSE is a safe space for all participants.

"The WYSE mentees that I worked with this year have been so open and giving, and it's been wonderful to grow alongside them in our social awareness and sense of selves."

"This year has been so insightful as a mentor! Although we were doing sessions virtually, we were able to connect together with mentees and other mentors. The topics from sessions were also great and the mentees were really engaged."

Methodology:

Start-of-year surveys were administered at all WYSE branches. Questions were asked on a four-point scale from 1 ("Strongly Disagree") to 4 ("Strongly Agree"). Percentages reflect the proportion of respondents who answered 3 or 4 on the scale.



Summary of Mentee Survey Responses

100%

WYSE helped me be confident in my ability to make healthy decisions to achieve my goals.

"One thing I learned was loans and college. I've heard of loans but I never knew what it was."

100%

WYSE helped me be able to take action when someone around me is faced with sexism, racism, or other discrimination.

"I loved how we learned about the LGBTQ+ community and other very important topics that most girls are afraid to ask about."

100%

Participating in WYSE helped me to better understand and accept my personal identity.

"I wish WYSE was more often!"

Methodology:

Start-of-year surveys were administered at all WYSE branches. Questions were asked on a four-point scale from 1 ("Strongly Disagree") to 4 ("Strongly Agree"). Percentages reflect the proportion of respondents who answered 3 or 4 on the scale.



Nathalie (she/her) - Board



Lauren (she/her) - Board / UCI Al...



Siri (she/her) Alumni Com/Tul...



JULIANNE STEELE



Miranda (she/her) - Oxy



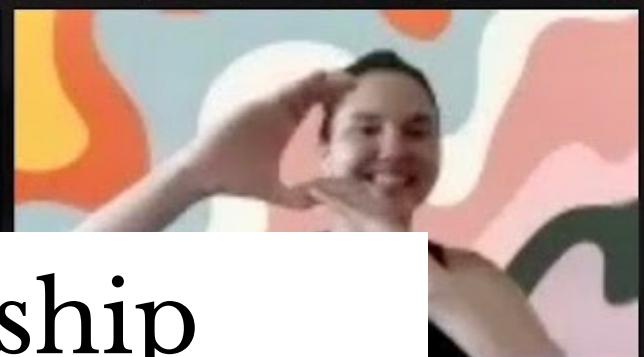
Remi (she/hers) Alumni Com/...



Melissa(she/her)-Bo

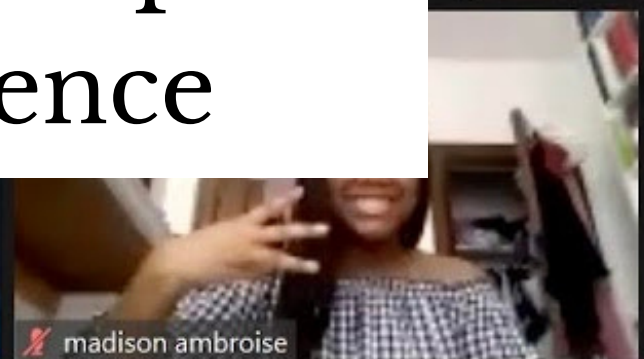
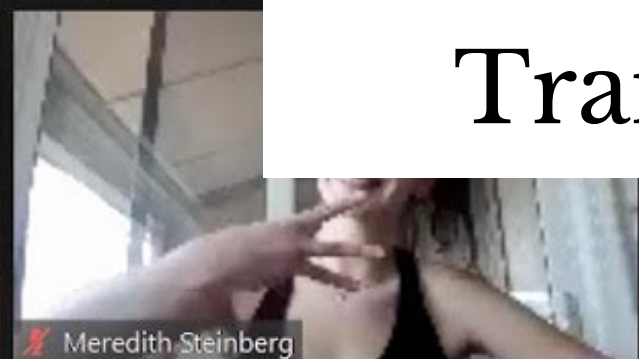


Meredith Steinberg



Elizabeth Gomez (she/her) UC...

National Leadership Training Conference



madison ambrose

Na

Virtual NLTC 2020

Our annual National Leadership Training Conference (NLTC) – the one time each year where directors from all branches convene in one place – could not safely happen in person. As such, we are proud to have facilitated a virtual NLTC on July 11-12, 2020.

Branch directors gathered to discuss rapidly changing COVID-19 guidelines related to the impending program year. At the same time, beautiful moments of resilience, dedication, and creativity were celebrated. Branch leaders recounted how mentors and mentees alike continued to embody the spirit of WYSE through these unprecedented times. Resourcefully using social media, online tools, and good old fashioned phone calls, mentorships continued to flourish.

Thank you to our guest speakers Nickie Acero from Step Up, Jaylene Chung from Young Storytellers, and Aisha Al-Amin and Reagan Jackson from Y-We who discussed on a panel the topic of Representation, Equity, and Belonging in Mentorship Programs, as well as speaker Jathusha Mahenthirarajan who spoke on Youth Engagement and Community Action.



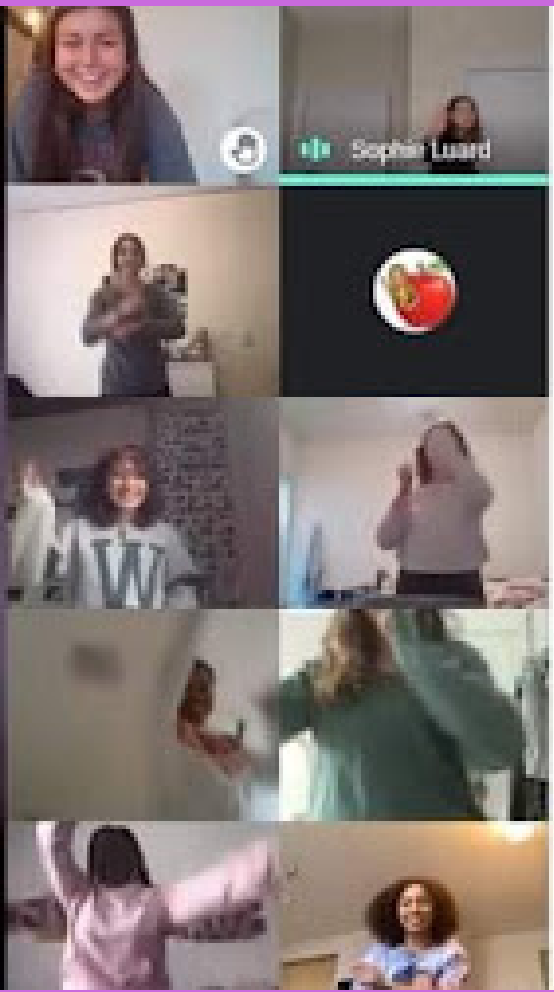
WYSE Week

WYSE Week is the annual celebration of WYSE's mission. It inspires mentors and mentees across our branches nationwide to take community action.

In the 2020-2021 program year, WYSE branches virtually celebrated WYSE Week **April 12-16, 2021**, with the theme "Unapologetically YOU!"

WYSE Week honors the core pillars of WYSE. The week of April 12th, we highlighted the magic of self-expression and personal identity in each of our mentees and mentors. Through a full week of celebration and events, we focused on inclusivity, the power of one's voice, and the importance of individuality.





guidelines <3

Y.S.E.

what's said here stays here.
what's learned here leaves here!

respectful listening

respect boundaries and
listen when someone says stop

think outside the box :)

be willing to be open and
vulnerable, even when that's scary

take care of yourself

erika says something radically
awesome

don't be inclusive of everyone
don't be offensive or hurtful

take risks!

give space to speak

don't pressure each other

respect the experience
value the lesson first

always assume best
intentions radically

give praise and remember it!

Ashley
erika
Grace



WYSE IS A NATIONAL MENTORING ORGANIZATION FOUNDED IN 1992 DEDICATED TO STRENGTHENING THE LIVES OF YOUNG WOMEN AND THEIR COMMUNITIES.

WYSE WORKS WITH MIDDLE SCHOOL GIRLS FROM UNDER-RESOURCED AREAS. THE WYSE CURRICULUM FACILITATES THE SELF-EMPOWERMENT OF THE MENTEES BY EXPLORING TOPICS SUCH AS RACISM, SEXISM, HEALTHY BODY IMAGE, COMPREHENSIVE SEX ED, DRUGS, GANGS, TEENAGE PREGNANCY, & FUTURE OPTIONS.



SPOTLIGHT:
GW WYSE

Excerpted from a submission by Karly Meyer, Executive Director of GW WYSE

With the uncertainty of the program year, George Washington University WYSE (GW WYSE) was committed to **supporting our mentees and maintaining a sense of community in a virtual format**. With mentors across the country and the world, our Directors Team worked hard to provide **consistent programming and a sense of connection** for both mentors and mentees.

Throughout the year, we managed to **drastically increase our presence as an organization at George Washington University, tripling our mentor interest and applications**. In order to conduct live virtual sessions with students at Jefferson Middle School, we reached out to many teachers for assistance in recruiting mentees and reaching them digitally (special thanks to both Mr. Moody and Mr. Dettloff for their immense help and support).

**SPOTLIGHT:
GW WYSE**

We met virtually with mentees for an hour every Thursday via Microsoft Teams. While developing session plans, we were as creative as possible in a virtual format, including interactive games such as Jeopardy and Among Us.

Due to our influx of mentors, we split into two alternating “on” and “off” groups to ensure the mentee’s voices would not be overpowered. While not in session, the off group met remotely to help with other WYSE-related tasks such as creating educational infographics and Tik Toks for our social media, and planning fundraisers and bonding events.



**SPOTLIGHT:
GW WYSE**



We supplemented sessions with bi-weekly mentor bondings which included activities like Pictionary, charades, scavenger hunts, and “guess the mentor” to stay connected throughout the semester. In addition to bondings and sessions with mentees, we conducted weekly reflection meetings and a post-session survey for mentors to share their thoughts about virtual sessions.

We also designed and ordered WYSE apparel for the first time, thanks to a financial grant from National WYSE!

**SPOTLIGHT:
GW WYSE**

Our mentors living in D.C. hand delivered **WYSE graduation goodie bags** to Jefferson Middle School, where our mentees could pick them up. The bags each included a WYSE t-shirt, bracelets made by mentors, and WYSE diplomas.

We planned and conducted two fundraisers - one for a local women's shelter, House of Ruth, for Domestic Violence Awareness Month (DVAM), and one for an organization called In Our Own Voice: National Black Women's Reproductive Agenda.



All the while, an expansion committee was formed in the Spring dedicated to researching and planning our branch's expansion to a second school site within DC Public Schools.

Despite the challenges faced this year, our branch was committed to providing as much support and normalcy as possible and managed to grow in ways we would have never imagined!

Karly Meyer
Executive Director

George Washington University WYSE Branch

**SPOTLIGHT:
GW WYSE**

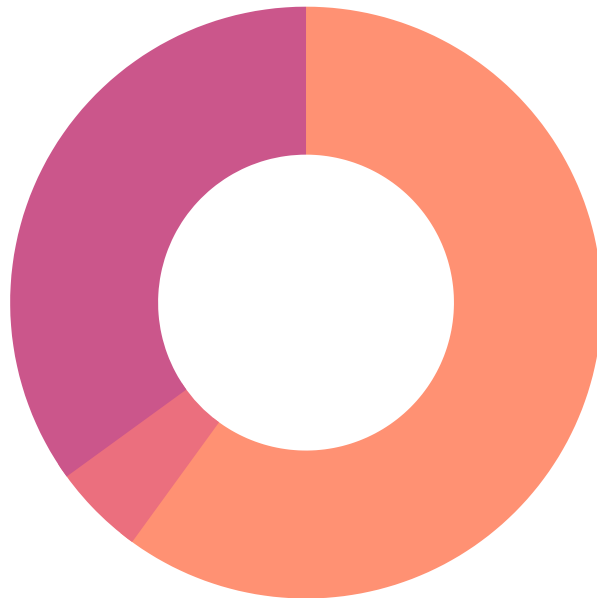
Financial Overview

What did our finances look like in 2020? Here is an overview of the expenses and revenue for WYSE, with comparison to years past, from **January 2020 through December 2020**.

WYSE is a 100% volunteer-run organization, with nominal overhead expenses and all revenue channeled directly to programming, operations, and fundraising support.

Expenses

Total expenses in 2020: \$5,503.90



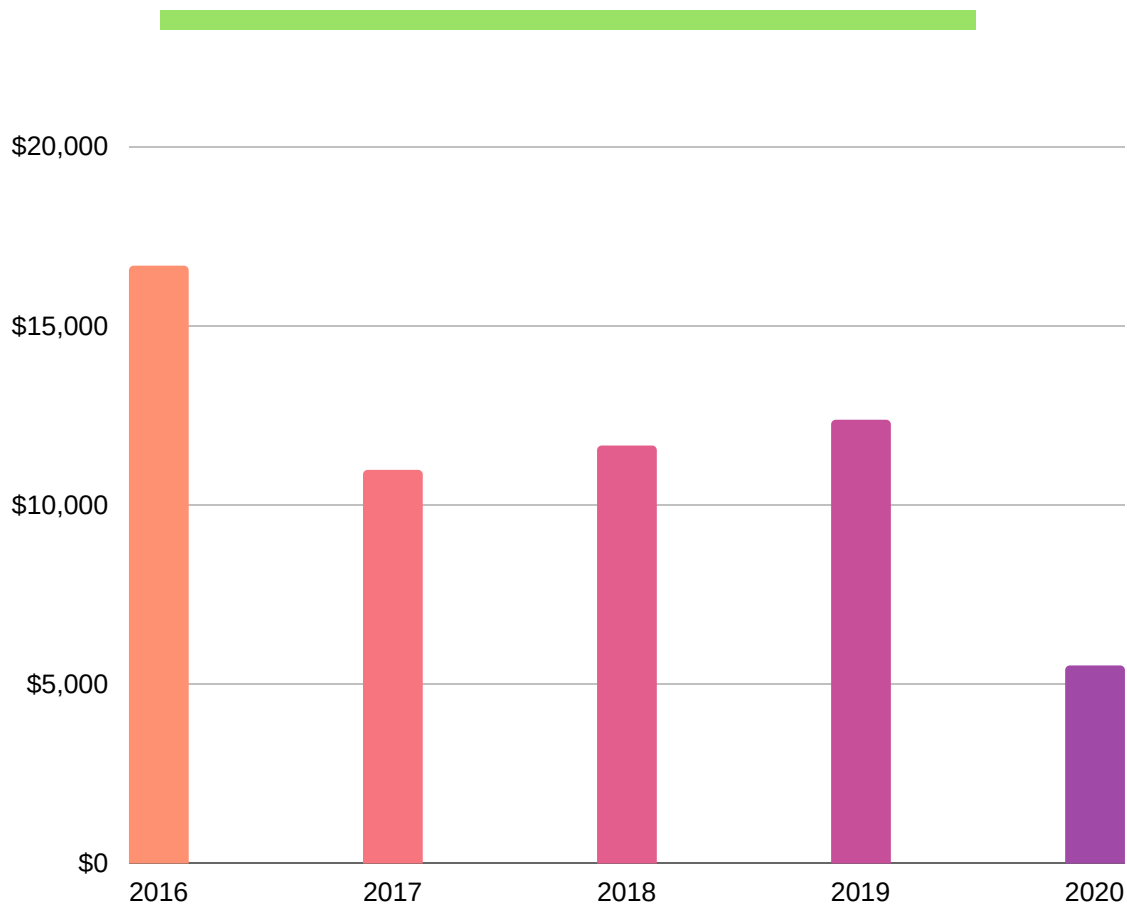
Programming
35%

Background Checks
5%

Insurance
60%



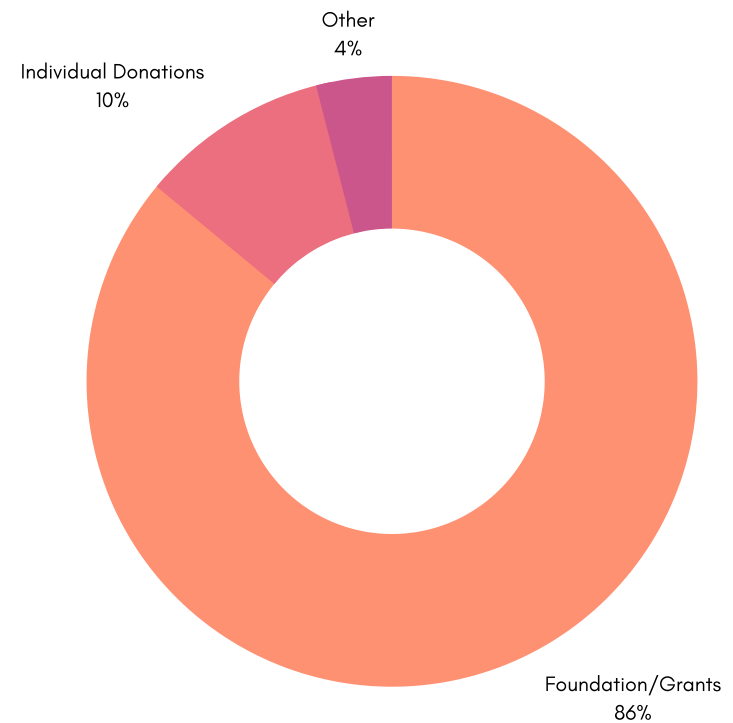
Expenses





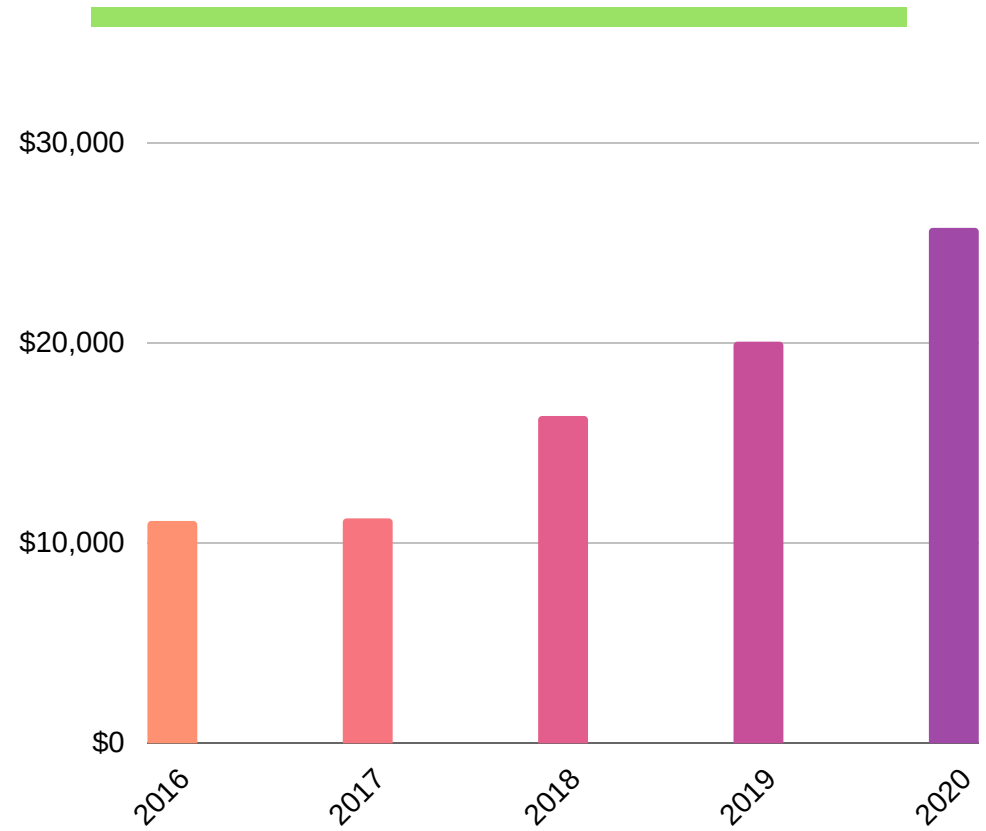
Revenue

Total revenue in 2020: \$25,706.83





Revenue



Thank You, Donors!

Thank you to our generous WYSE family of donors in 2020* that supported our programs across the nation.

Alex Salzberg

Alex Tilsley

Allison Basker

Anna Shaw-Amoah

BJ Serviss

Chloe Rice

Izma Shabbir

Joelle Jackson

Kayleen Sullivan

Laura Shaw

Lauren Gorski Allen

Leah Ghoston

M Yvonne Chao

Madolyn Hollowed

Manik Marasinghe

Margaret Deagon

Meghan Bondy

Melinda Goedeke

Melissa Beek

Melissa Pierce

Nathalie Sarju

Remi Beek

Siri Anderson

Sonam Penzo

Stephanie Kennedy

**These donations span January 1, 2020- December 31, 2020*

Thank You, Community Partners!

WYSE received in-kind contributions, pro bono services, and foundation and corporate donations from the following partners*:

Goldman Sachs Easy Match

The Benevity Fund

Amazon Smile

Marilyn S. Broad Foundation

Gloria and Stanley Shaver Memorial Scholarship

The Walt Disney Company Foundation

**These donations span January 1, 2020 - December 31, 2020*



Connect with us

EMAIL

info@WYSE.org

WEBSITE

www.WYSE.org

SOCIAL

LinkedIn:

Women and Youth Supporting Each Other

Facebook and Twitter:

@WYSEmentoring

Instagram:

@WYSE_Mentoring





Women and Youth Supporting Each Other

Est. 1992

Thank You!